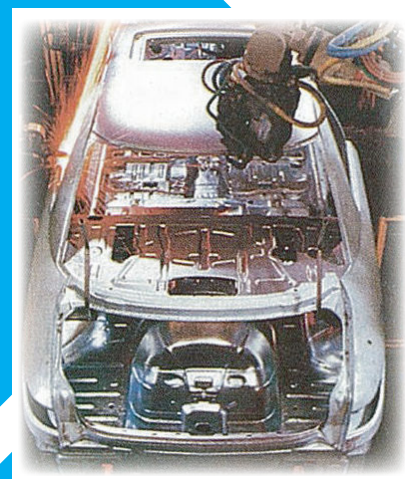


**FAMILIARC™**

# MG-51T

## Solid Wire for Gas Metal Arc Welding



### Application

**FAMILIARC MG-51T** is a solid wire suitable for butt or fillet welding of mild steel or 490 MPa high tensile strength steel. It is most suitable for thin plate welding which is normally used in the automobile and motorcycle industries.

### Features

- ◆ **FAMILIARC MG-51T** provides smoother wire feeding due to less resistance fluctuation.
- ◆ The copper plating and glossy wire surface of **FAMILIARC MG-51T** assure a stable arc are due to constant electric conductivity, which results in less spattering.
- ◆ The solid copper plating and special surface treatment of **FAMILIARC MG-51T** assure excellent weather proofing against rusting.
- ◆ A unique package, Turtle Pack™, provides easy handling and gripping of the wire.



Fig.1 Superior copper plating of MG-51T  
(no flake on the surface)

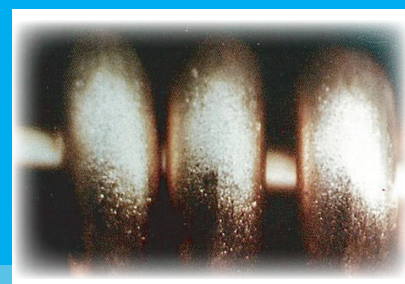


Fig.2 Flake of copper plating in  
conventional wire.

# MG-51T

## Typical chemical composition of weld metal

C	Si	Mn	P	S	Shielding gas
0.11	0.53	1.15	0.011	0.012	CO <sub>2</sub>

## Typical mechanical properties

YP at 0.2% OS (MPa)	TS (MPa)	El (%)	IV at -30°C (J)	Shielding gas
470	560	32	70	CO <sub>2</sub>
520	600	31	90	Ar+20%CO <sub>2</sub>

## Available sizes and unit weight

Size (mm)	0.8	0.9	1.0	1.2	1.4	1.6
Spool (kg)	20	20	20	20	20	20
Arrow pack (kg)	250	250	300	300	300	400

## Recommended welding current

Diameter (mm)		0.8	0.9	1.0	1.2	1.6
DC-EP (A)	Flat	50-160	50-200	50-220	80-350	200-550
	Vertical Up	50-130	50-140	50-140	50-160	-
	Overhead	50-100	50-120	50-120	50-140	-

## Shipping Approval

ABS	DNV	NK
3SA, 3YSA	III YMS	KSW53G(C)

### DISCLAIMER

- Information in this booklet such as chemical compositions and mechanical properties is typical or example for explaining the features and performance of our products, and it does not guarantee otherwise specified.
- Information contained herein is subject to change without notice. Please kindly contact KOBELCO for latest information

» For Technical Consultation, please contact **Technical Service.**

KOBELCO MIG WIRE (THAILAND) CO.,LTD.

### Head Office and Factory

491 Moo 4 Soi 1 Bangpoo Industrial Estate, Sukhumvit Road, Praeksa, Muang, Samutprakarn 10280, Thailand  
Tel : (+66)-2-324-0588~91 , Fax : (+66)-2-324-0797  
Web site : <http://www.thaikobelco.com>

### Bangkok Office

10<sup>th</sup> Fl., Sathorn Thani II Building, 92/23 North Sathorn Road. Silom, Bangrak, Bangkok 10500, Thailand  
Tel : (+66)-2-636-8650~2 , Fax : (+66)-2-636-8653



JQA-QM3667  
JQA-EM5680